

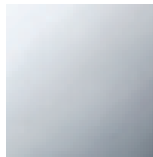


Bathtub - Meta

Wall elbow - polished chrome

Article number: 28 450 625-00

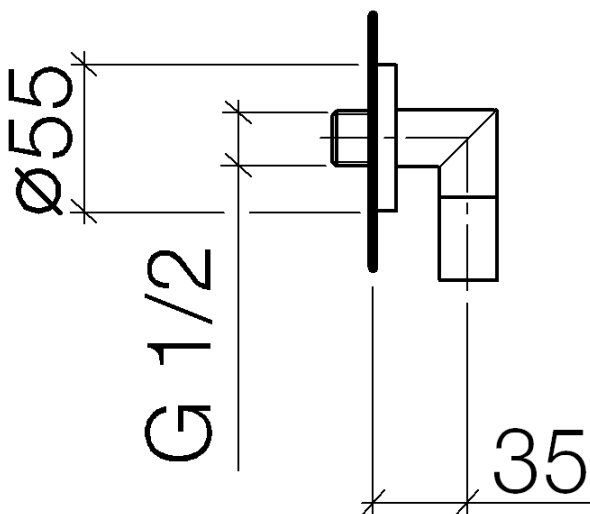
- 3/8" Shower outlet
- Flange diameter 2-1/8"
- 1/2" connection
- Internal backflow preventer.



polished chrome

Accessory is required for this item.

Dimensional drawing

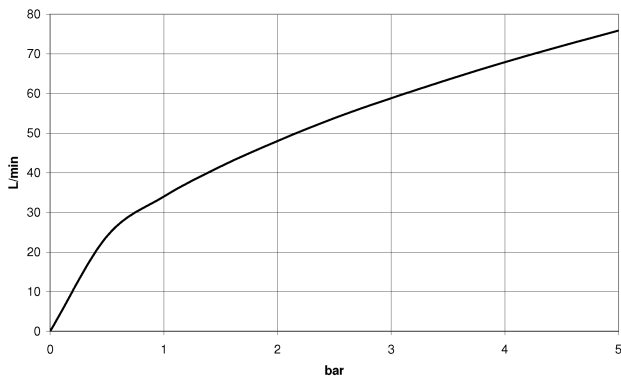


All dimensions in mm / inch = mm x 0,0394



Bathtub - Meta
Wall elbow - polished chrome
Article number: 28 450 625-00

Flow rate chart





Bathtub - Meta

Wall elbow - polished chrome

Article number: 28 450 625-00

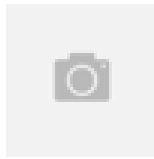
Other surface finishes



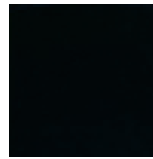
platinum matte
28 450 625-06



platinum
28 450 625-08



Brushed Durabrass
28 450 625-28



black matte
28 450 625-33



Dark Platinum matte
28 450 625-99

More custom finish options are available via special production (xTra Service). Please see our finish matrix for availability and pricing or contact a Dornbracht representative.

Required article



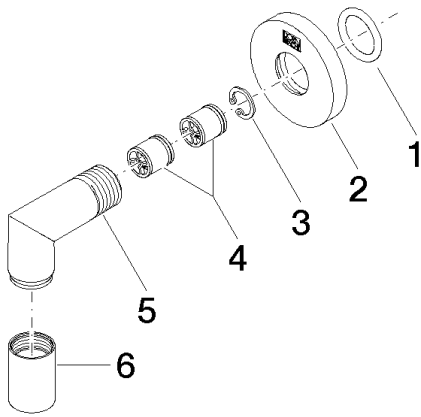
35 080 970-90 0010
Rough-in adapter -

Bathtub - Meta

Wall elbow - polished chrome

Article number: 28 450 625-00

Spare parts list



Number	Item Number	Designation	Number of units
1	09 14 10 026 90	seal	1
2	09 27 22 003-00	rosette	1
3	09 16 01 014 90	ring	1
4	09 23 01 040 90	back-flow preventer	2
5	09 11 03 036-00	connection	1
6	09 21 02 069-00	cover	1